



Qualys Global IT Asset Inventory v1.x

Release Notes

Version 1.2.1

August 28, 2020

Here's what's new in Qualys Global IT Asset Inventory 1.2.1!

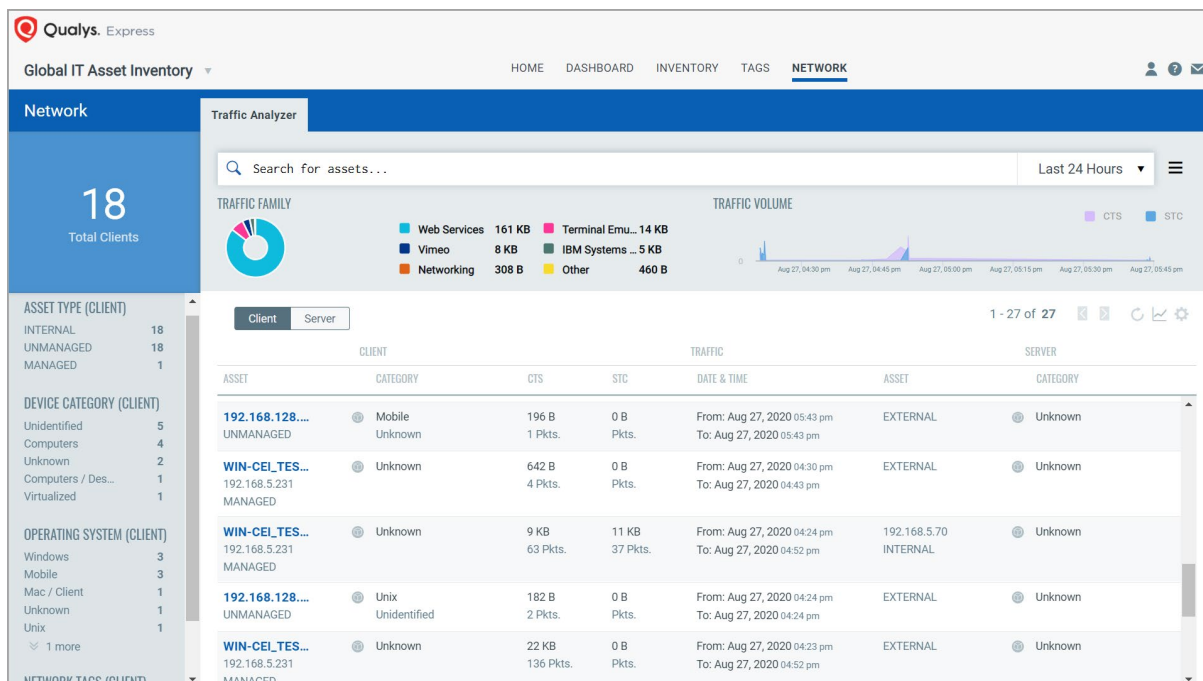
[Traffic Analyzer](#)

Traffic Analyzer

With this release, we've introduced "Traffic Analyzer" feature in Global IT Asset Inventory if your subscription is enabled for it.

Traffic Analyzer provides a detailed and consolidated view for the traffic in your network. This helps you to understand the communication between different assets in your environment. For example, communication of certain type of an unmanaged asset from unsecured network to a critical resource. It also shows date wise traffic volume summary for client to server (CTS) and server to client (STC) in tabular and graphical view. It provides graphical views of the traffic categorized by family and by volume. It shows all traffic flow details for both managed and unmanaged assets.

Go to Global IT Asset Inventory (AI) > Network > Traffic Analyzer.



For each flow, one can pivot to any of the two assets participating in the traffic flow to check the details such as asset summary, network information, system information, list of open ports and traffic summary of an asset.

For more information on Traffic Analyzer, refer [Online Help](#) from UI.