



Qualys Connector v1.1.1

Version 1.1.1

December 08, 2022

Here's what's new in Qualys Connector 1.1.1!

[Introducing Auto-Run Functionality for AWS and GCP Organization](#)

[Launching Detach/Attach For AWS Member Connectors](#)

Qualys Connector 1.1.1 brings you improvements and updates! [Learn More](#)

Introducing Auto-Run Functionality for AWS and GCP Organization

We are introducing the option to automatically run organization (org) connectors at intervals. You can save time and no longer have to manually run connectors to sync changes made in your AWS/GCP account. Now, the auto-run can sync changes to the org/member connectors based on the polling frequency.

Enable Auto-Run for AWS and GCP Organization Connectors

- 1) To set up auto-run, start by creating a new AWS or GCP org connector. For this example, we will show you auto-run for GCP.
- 2) Set your preferred polling frequency in the 'Organization Details' step while creating the org connector. The polling frequency is the interval where the org connector fetches data from your cloud provider. This interval is when the auto-run searches for available organization connectors to run.

The screenshot shows the 'Create Organization Connector: Google Cloud Platform' wizard, specifically Step 2 of 6: 'Organization Details'. The left sidebar lists the steps: 1 Basic Details, 2 Organization Details (current), 3 Project Details, 4 Connector Details, 5 Assign Tags, and 6 Review and Confirm. The main content area shows a file upload section with '1 file' listed: 'winter-return-345208-c28231727836.json' (24/Aug/2022 10:30 AM, 2 KB). Below this is the 'Polling Frequency' section, which includes a description: 'Configure the interval at which the organization connector should fetch data from GCP cloud provider.' It features two dropdown menus: 'Hours' (set to 2) and 'Minutes' (set to 0). A note states: 'Note: Altering the polling frequency (less than 4 hours) may result in GCP API throttling error. Choose an appropriate frequency that suits your requirement.' Below the note is the 'Test Connection' section, which says: 'Provide the above details to enable Test Connection. You can proceed with the next steps after the test connection is successful.' There is a 'Test Connection' button. At the bottom are 'Cancel', 'Previous', and 'Next' buttons.

- 3) Similarly, set the polling frequency of the project connector in the 'Project Details' step. The available project connectors automatically run scans during the set interval.

← Create Organization Connector: Google Cloud Platform

STEPS 3/6

- 1 Basic Details
- 2 Organization Details
- 3 Project Details
- 4 Connector Details
- 5 Assign Tags
- 6 Review and Confirm

Project Details

The GCP project configuration settings are applicable to all the project-level connectors.

Polling Frequency

Configure the interval at which the connector should fetch data from GCP cloud provider.

Hours: Minutes:

You can also enable auto-run to create/disable connectors when there are changes to the project/member account.

- 4) Proceed to the Connector Details step on the 'Create Organization Connector' page. Choose 'Automatically create connectors for new projects' and/or 'Disable connectors for deleted projects'.

As the names suggest, the auto-run scan recognizes changes in the GCP account and proceeds to either create a project connector or disable them accordingly.

← Create Organization Connector: Google Cloud Platform

STEPS 4/6

- 1 Basic Details
- 2 Organization Details
- 3 Project Details
- 4 Connector Details
- 5 Assign Tags
- 6 Review and Confirm

Connector Details

Select the GCP Folders

Folders

☒ All ☐ Select Folders

☐ Exclude Folders

☐ Automatically create connectors for new projects.

☐ Disable connectors for deleted projects

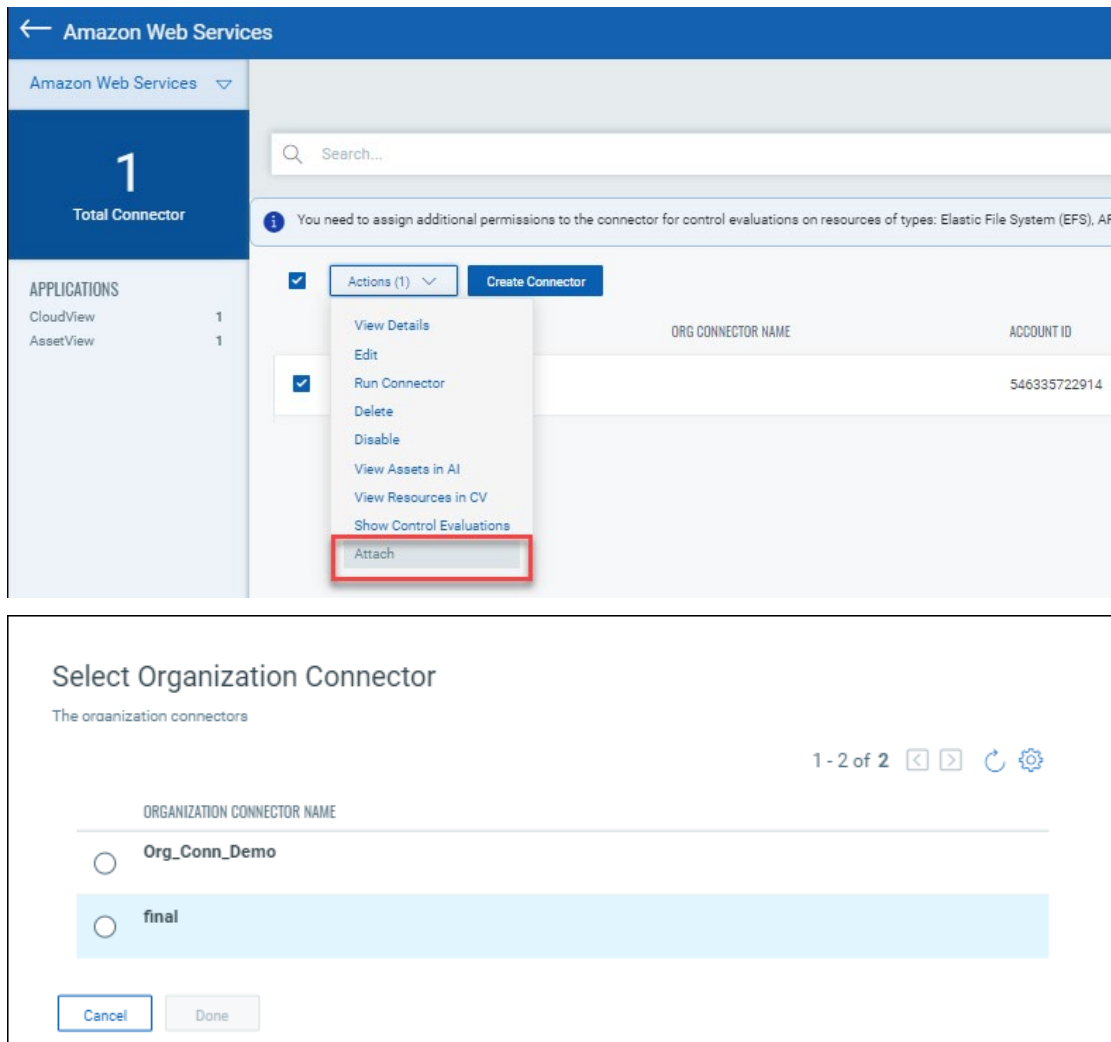
Launching Detach/Attach For AWS Member Connectors

We are introducing the option to attach/detach member connectors to/from an organization. AWS connectors can inherit an organization connector's configurations by attaching it to the org connector. Meanwhile, member account connectors can update their configurations by detaching from the organization connector.

Attach a Member Account Connector

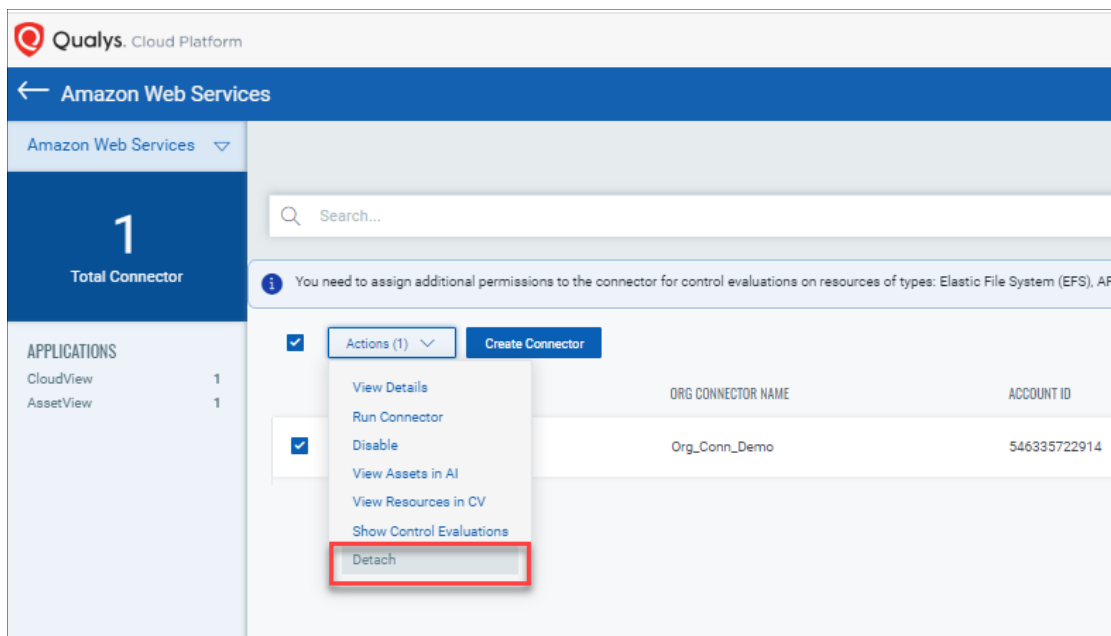
Attach connectors by selecting an AWS connector (belonging to an organization) and choosing **Attach** from the quick action menu. The selected connector can attach itself to a list of possible organization connectors. The new member connector inherits the organization connector's

configurations but retains its metadata.

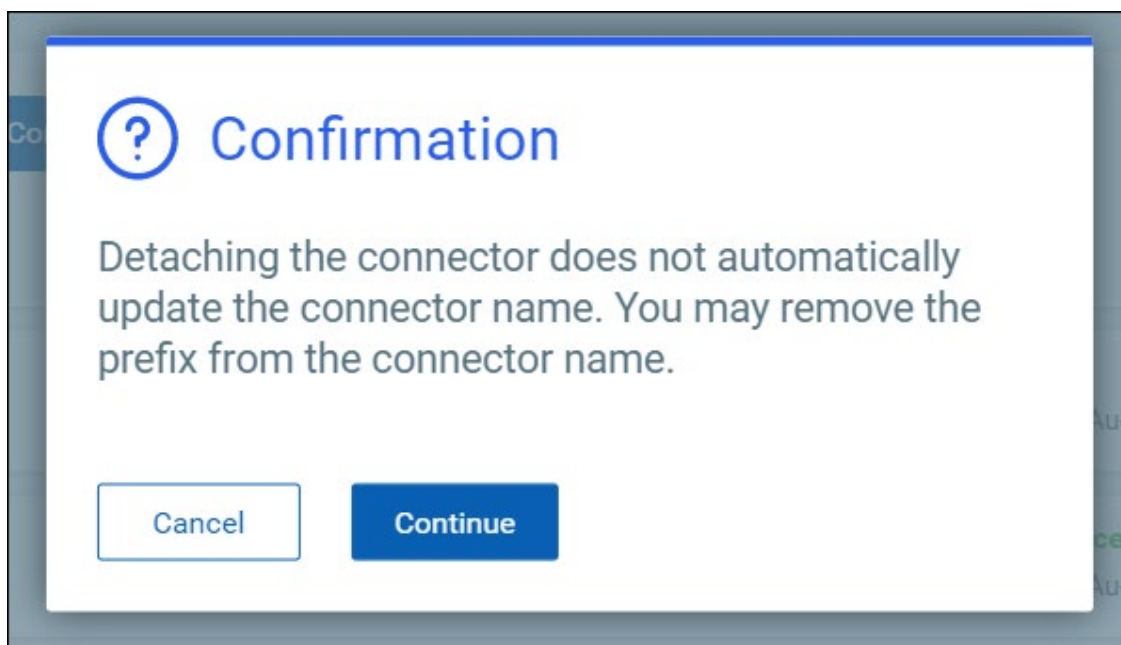


Detach a Member Connector

Detach connectors by selecting the member connector, opening the quick action menu, and choosing **Detach**.



We recommend you remove the prefix of the detached member connector to prevent any errors.



Issues Fixed In This Release

The fixes will be implemented on portal 3.13.1.

- We fixed an issue where customer was unable to edit/delete connectors due to a backend error.
- We fixed an issue where customer was not able to create a connector when base account entry was missing from the database.
- We fixed an issue where OCI connectors were shown to be in error state.
- We fixed an issue where connectors with failed ARN validation had their running assets get terminated. Now, the ARN validation results do not affect assets.
- We have changed the request body of the v2 create aws connector api to include externalid and arn.
- We fixed an issue where the v3 assetdataconnector search api was showing an error in response.