



Qualys Cloud Suite 2.28

We're excited to tell you about improvements and enhancements in Qualys Cloud Suite 2.28.



AssetView



ThreatPROTECT

[View Policy Compliance Summary in Asset Details](#)
[Export Dashboards and Widgets](#)
[Choose Sorting Method in Dashboard Widgets](#)
[Apply Tags to Multiple Assets](#)



ThreatPROTECT

[Create Widget from ThreatPROTECT Feed](#)



Cloud Agent

[Cloud Agent AIX beta](#)



Security Assessment Questionnaire

[Pre-populate Previously Answered Questionnaire](#)
[Set Notifications and Reminders](#)



Web Application Scanning

[Enhanced Tag Selection](#)



Web Application Firewall

[Custom Response Pages](#)
[Add weights to Web servers in a pool](#)
[View server healthcheck status by appliance](#)
[Appliance View improvements](#)
[Web Applications View improvements](#)

Qualys Cloud Suite 2.28 brings you many more
Improvements and updates! [Learn more](#)



AssetView

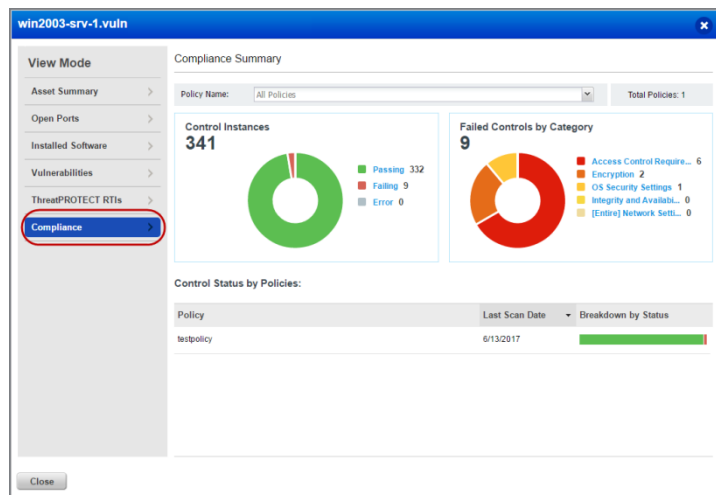


ThreatPROTECT

View Policy Compliance Summary in Asset Details

You can now view all your Policy Compliance Summary for an asset in the new Compliance tab. Here you can see the compliance policies this asset is associated with and how the policies are doing in terms of secure configuration controls on this asset.

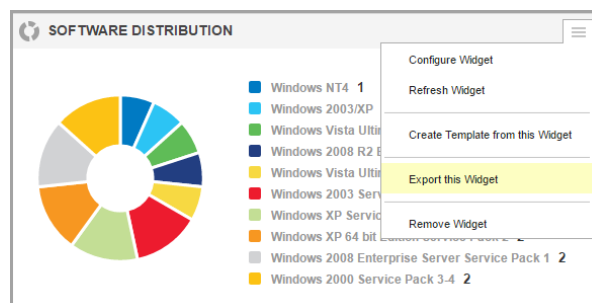
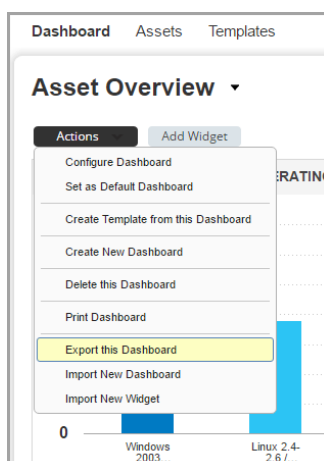
Simply navigate to Assets tab, select an asset and click View Asset Details. Locate the Compliance tab to view a detailed compliance summary for that asset.



Export Dashboards and Widgets

Widgets and dashboard configurations are now exportable to a file in a json format, allowing you to share them between accounts or within the Qualys community.

While exporting you can choose to include values for these search queries: name, netbiosName, tags.name, interface.*, account.username, and connectors.connector.name. Keep in mind if you choose to include the values are sanitized in the exported file since this information is considered potentially sensitive.

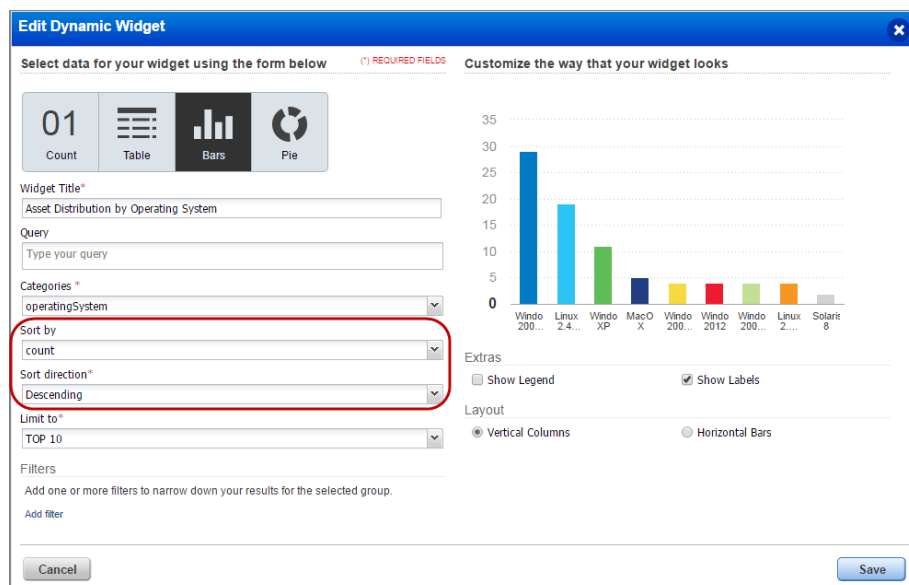


Similarly, you can import dashboards and widgets by importing files in json format.

Choose Sorting Method in Dashboard Widgets

Using the new Sort by and Sort direction dropdown, organize information displayed in widgets by count or by tag name as well as in ascending or descending order.

Simply edit an existing widget or create a new Table, Bars, or Pie type of widget and from Sort by and Sort direction drop-downs select the sorting order.



The 'Edit Dynamic Widget' dialog box is shown. The 'Sort by' dropdown is set to 'count' and the 'Sort direction' dropdown is set to 'Descending'. A bar chart is displayed on the right side of the dialog.

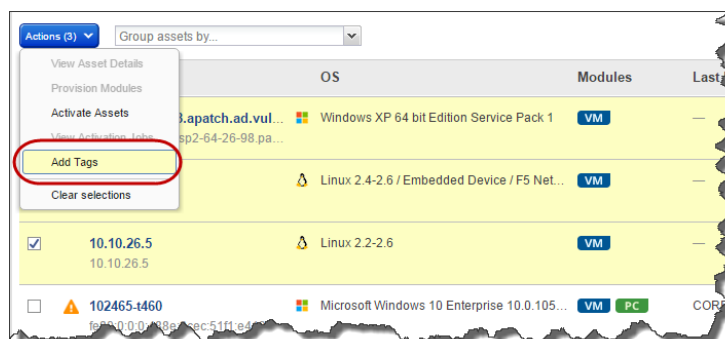
OS	Count
Windows 2000	30
Linux 2.4	20
Windows XP	10
Mac OS X	5
Windows 2003	5
Windows 2012	5
Linux 2.6	5
Solaris 8	5

Apply Tags to Multiple Assets

You can now apply tags to multiple assets from the assets list at one go. Simply, select the assets you want to tag and from the Actions menu click Add Tags. At a time you can tag up to 10,000 assets.


The selected tag is applied to all the chosen Assets and can be viewed in the Tags column in the Asset List.

While applying tags, dynamic tags are not displayed as such tags cannot be bulk assigned to assets.

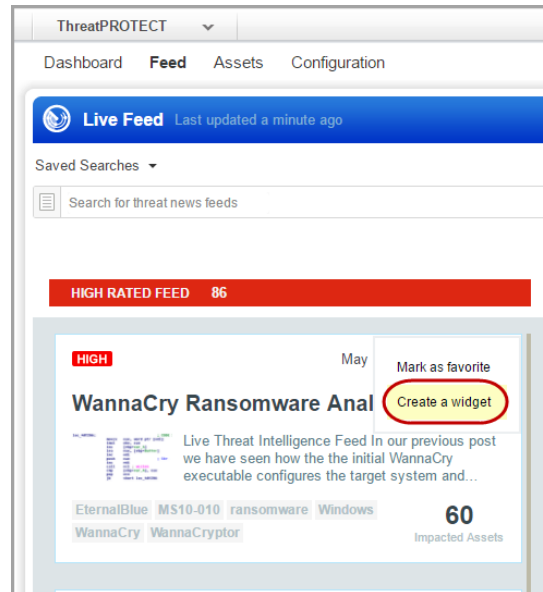


Create Widget from ThreatPROTECT Feed

You can now easily create a dashboard widget from a live ThreatPROTECT feed.

Simply click  in the top right corner of the desired live feed and select Create a widget.

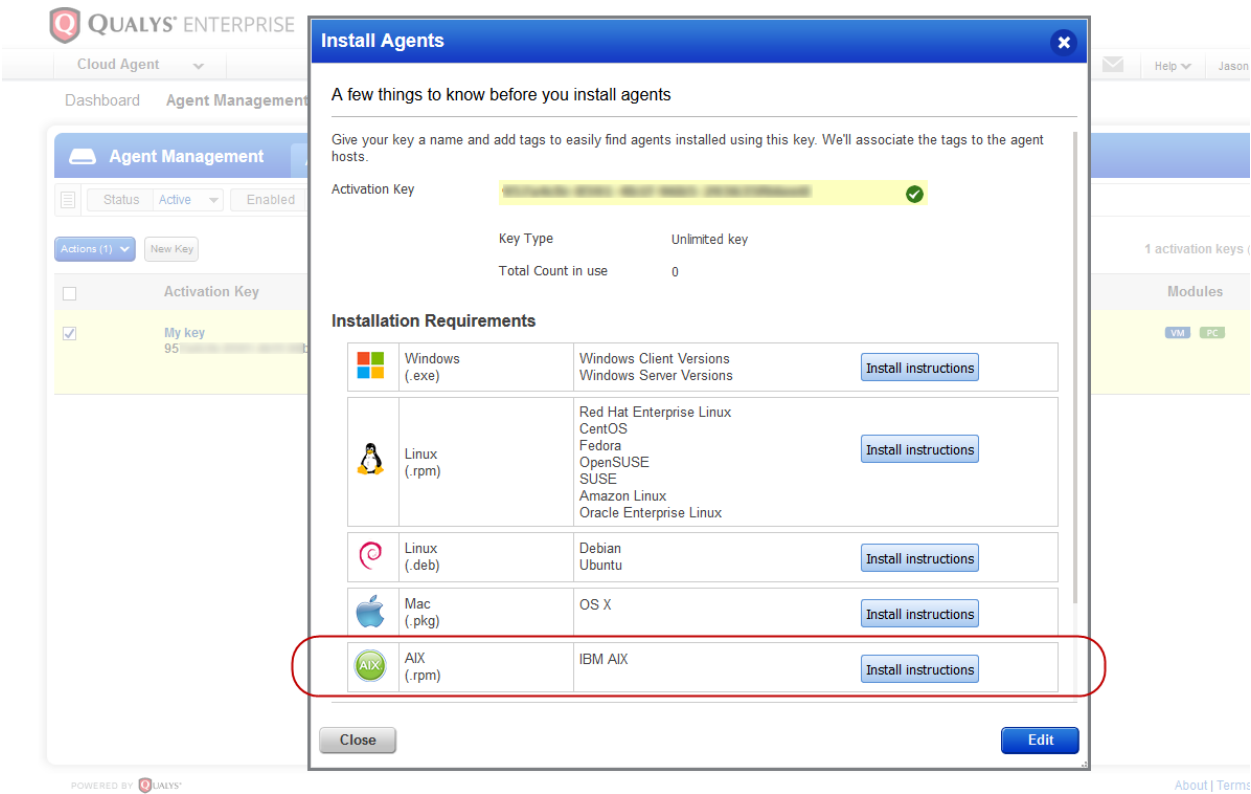
The new widget is then added to your Dashboard.





Cloud Agent AIX beta

Portal support for beta release of Cloud Agent supporting AIX 6.1, 7.x POWER architectures
- for invitation only, contact your Technical Account Manager to join the beta program



Pre-populate Previously Answered Questionnaire

Send pre-populated questionnaires to a user who has in the past answered the same questionnaire. Answers to the questions provided earlier by the user are displayed in the questionnaire and the user can change the answers or can keep them as is.

While creating a campaign, choose the users you want to send the questionnaire to. From the Actions menu select Assign Previously Answered to view the list of users who can be sent pre-populated questionnaire.

Users having questionnaire type New are always sent only blank questionnaires. Only users having the Previously Answered questionnaire type can be sent a new or a pre-populated questionnaire.

Campaign Creation Turn help tips: On | Off

Step 3 of 5

Below is a list of users who will be invited to participate. When the campaign starts, they will receive an invitation email. (*) REQUIRED FIELDS

4 recipients

Add new recipients

Actions Search

Assign Previously Answered

Assign new

Remove User

Vendor	Title	Questionnaire Type
Patrick White (patrickwhite@abc.co)	abc	New
Irina Starsky (irina.starsky@xyz.co)	xyz	Previously Answered
s s (s@ff.com)	s	Previously Answered
		New

Cancel Previous Continue

Set Notifications and Reminders

Now you can send notification mails to remind users about questionnaires assigned to them.

Simply create a new campaign and in the Notifications section, specify when, how often, and at what stages of the campaign the notification mails should be sent to the user.

Campaign Creation Turn help tips: On | Off

Step 4 of 5

Set notifications and reminders for your campaign (*) REQUIRED FIELDS

Reminder Notifications

Specify when to send notifications once the campaign is launched.

☒ Reminder Notifications

Start notification after 1 day(s)

Send reminders after every 1 day(s)

Due Date Notifications

Specify when to send notifications if the campaign is nearing due date.

☒ Due Date Notifications

Start notification before 1 day(s) to the due date

Send reminders after every 1 day(s)

Overdue Notifications

Specify when to stop sending notification after the due date.

☒ Overdue Notifications

Send notification after every 1 day(s)

Stop notifications after 1 day(s) of due date

Cancel Previous Continue

Enhanced Tag Selection

We have enhanced our asset tag selection option to give you more ways to choose assets for your scans and reports. Now you can choose to

- Include or exclude assets associated with selected tags
- Match assets associated with Any or All selected tags

Scans

Let's launch a scan, for example discovery scan. The target for the scan includes all the web applications which have All of the selected tags: ParentTag, Business Units and Cloud Agent. The scan will exclude web applications that have at least Any one of the selected tag: WebApp2 or Webapp1 tag.

Reports

Similarly, when you generate report, let us include assets tagged with Webapp1 tag and exclude all the assets with Webapp2 tag from the report.

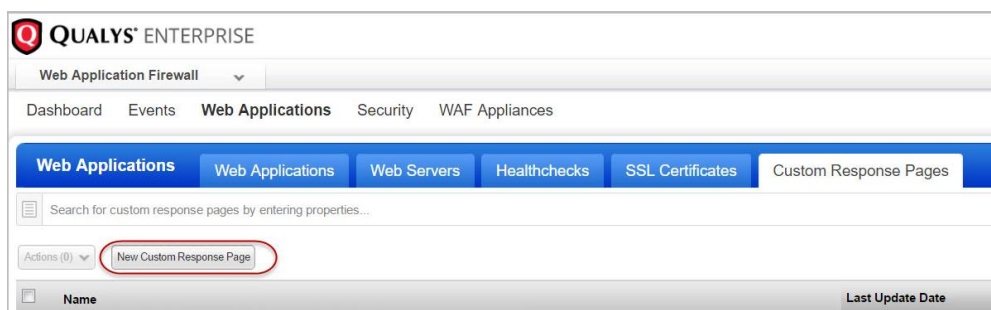
The selections you make are reflected in the report you generate.

The enhanced tag selection option is available when you launch a scan, create or edit a scan schedule, generate or schedule a Scorecard report or Web application report.

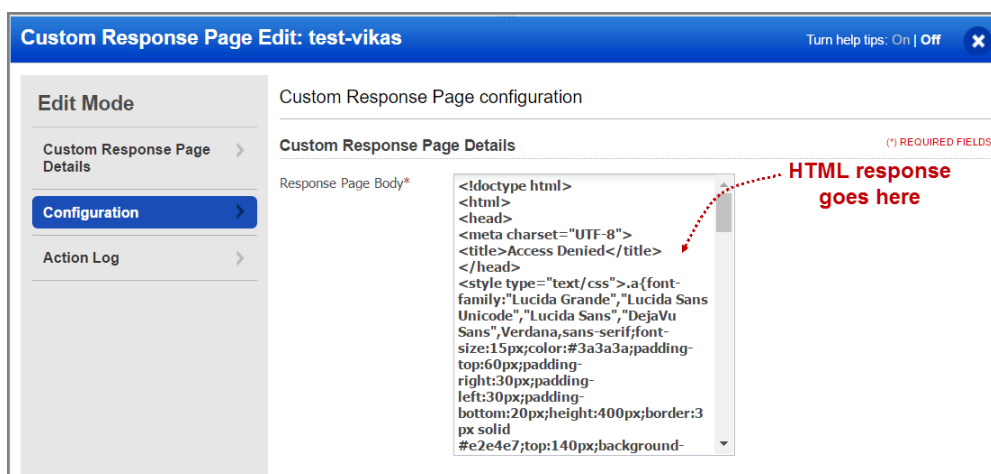
Custom Response Pages

You can now display a custom message to the user if your security policy blocks a particular section or a page on your web site. Instead of the default WAF error page, you can now choose to display a custom page.

To create a custom response page, simply go to Web Applications > Custom Response Pages and click the New Custom Response Page button.



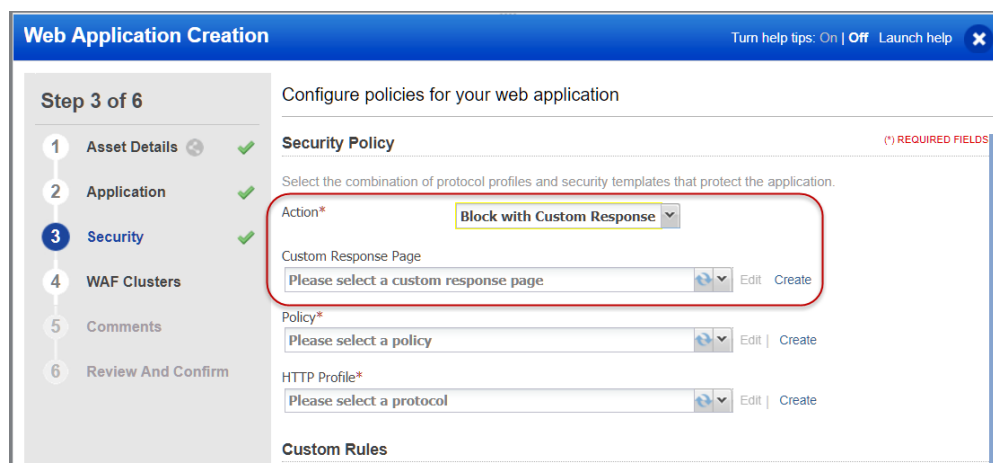
In the Custom Response Page Creation wizard, provide a name and add tags to your custom response page. Then in the Configuration panel's Response Page Body, paste your response in HTML format.



This custom response can now be reused for multiple web applications and appliance clusters. Simply select your custom response page in the Web application wizard, and the WAF cluster wizard.

Web application wizard – Custom Response

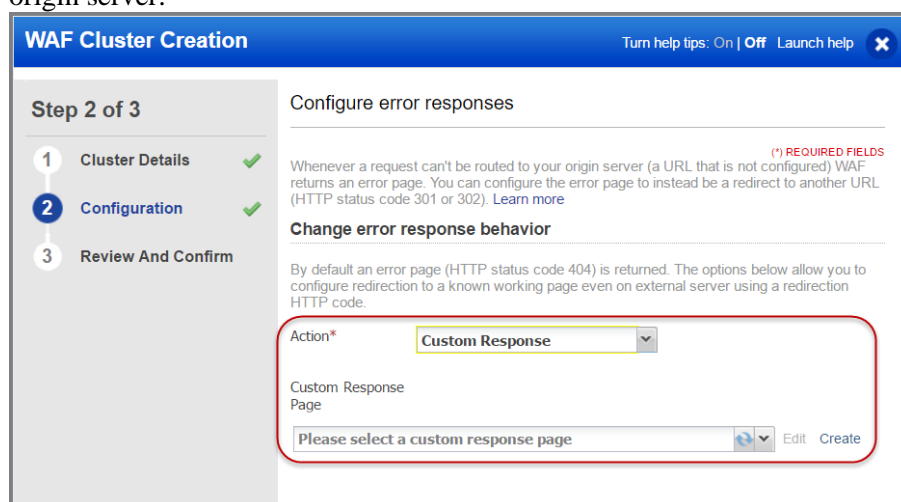
In the Security panel of the Web application wizard, select the Action as Block with Custom Response, and then select your custom response from the Custom Response Page dropdown.



Click Edit to modify the Custom Response Page, or click Create to add a new Custom Response Page.

WAF Cluster wizard – Custom Response

Similarly, you can choose to display a custom response page whenever a request cannot be routed to your origin server.



Add weights to Web servers in a pool

You can use weights for WAF to distribute the request load to various servers in the Web Server Pool. Consider a pool consisting of four origin servers with the weights 1, 2, 3 and 3. The total weights assigned to all servers is 9. WAF distributes $1/9^{\text{th}}$ of total load to sever 1, then $2/9^{\text{th}}$ of total load to server 2, and so on.

To specify weights, while creating a server pool, simply add the weight (number) beside the server address. You can add weights to your existing pool as well. Default is 1. Maximum allowed value is 256.

Web Servers Creation

Turn help tips: On | Off Launch help

Step 2 of 3

1 Web Servers Details

2 Configuration

3 Review And Confirm

Web Servers configuration

Application Servers (*) REQUIRED FIELDS

Here you define the server-side properties. Select a port, protocol (http or https), and a list of servers along with a load-balancing method.

Port*

80

Protocol HTTPS

OFF

Web Servers

Fill with your web servers' addresses and their weight

http:// Type address + Enter

1

No address entered

Load-balancing

roundrobin

Add the server weight here. Default is 1.

View server healthcheck status by appliance

You can now view the healthcheck status for all servers covered by an appliance. Server healthcheck information is grouped by each Web application that the appliance monitors.

The following healthcheck information is displayed for each server:

- Server host name, server port, and server status (UP / DOWN / No check),
- Healthcheck message, healthcheck return code (200 for success), and healthcheck status (L7OK for success, L4CON for failure).

QUALYS ENTERPRISE

Web Application Firewall

Help

Qualys User

Log Out

Dashboard

Events

Web Applications

Security

WAF Appliances

WAF Appliances

WAF Clusters

WAF Appliances

Search for WAF appliances by entering properties...

Show Graphs

New WAF Appliance

1 - 1 of 1

Name	Cluster	Appliance Version	Appliance Update Date	Appliance Config Update Date	Details
waf.waf-prod.dev.docker.qualys.com	Cluster	1.3.5	06 Jun 2017 June 06, 2017	07 Jun 2017 6 days ago	<div>CBB603CF-FB7B-4D98-AB7E-5DED302527E5</div> <div> <div>Healthchecks</div> <div> <div>Site Name</div> <div>webApp-InBlockMode</div> </div> <div> <div>Site uuid</div> <div>8957040a-12cd-47ca-b497-531d74d9ca21</div> </div> <div> <div>Server host</div> <div>192.168.24.140</div> </div> <div> <div>Server port</div> <div>80</div> </div> <div> <div>Status</div> <div>no check</div> </div> <div> <div>HC message</div> <div>-</div> </div> <div> <div>HC return code</div> <div>-</div> </div> <div> <div>HC status</div> <div>-</div> </div> </div> <div> <div>Site Name</div> <div>siteThree</div> </div> <div> <div>Site uuid</div> <div>50a89a46-3373-45f9-bc82-b57dedcad9ed</div> </div> <div> <div>Server host</div> <div>10.44.176.73</div> </div> <div> <div>Server port</div> <div>1980</div> </div> <div> <div>Status</div> <div>UP</div> </div> <div> <div>HC message</div> <div>HTTP status check returned code <200></div> </div> <div> <div>HC return code</div> <div>200</div> </div> <div> <div>HC status</div> <div>L7OK</div> </div>

Site Name

webappln-monitorMode

Site uuid

b4d5e122-d2ec-4287-b257-efb9cd14e82f

Server host

192.168.24.140

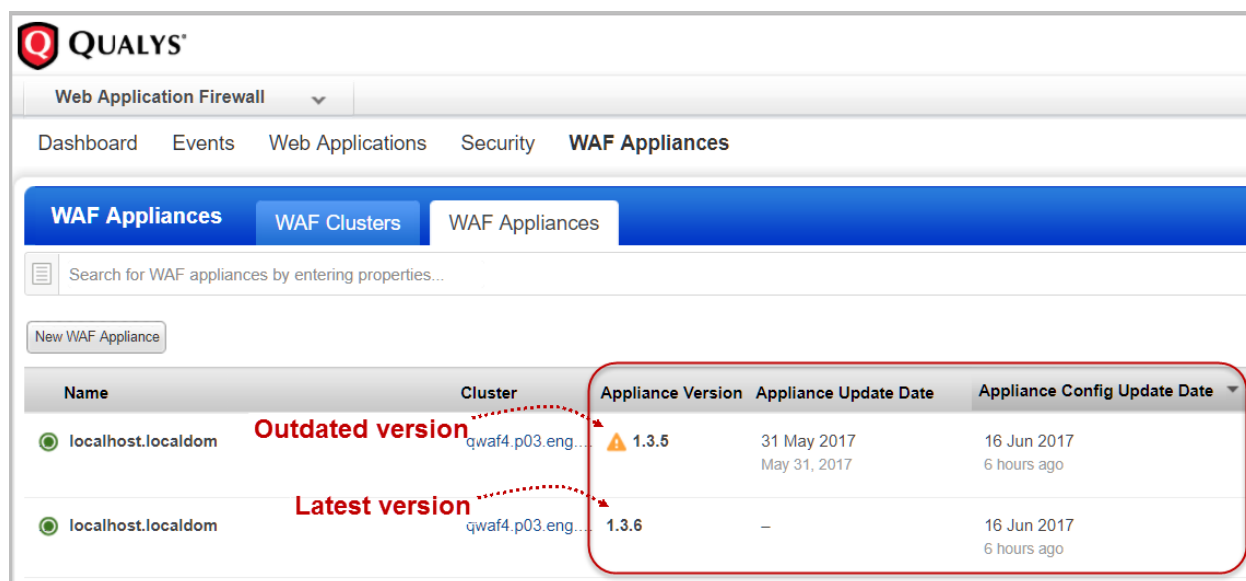
Server port

80

Healthcheck info for servers covered by this appliance

Appliance View improvements

The WAF Appliances tab now provides more information for each appliance in the appliances table.




Name	Cluster	Appliance Version	Appliance Update Date	Appliance Config Update Date
localhost.localdom	qwaf4.p03.eng...	1.3.5	31 May 2017 May 31, 2017	16 Jun 2017 6 hours ago
localhost.localdom	qwaf4.p03.eng...	1.3.6	—	16 Jun 2017 6 hours ago

The Name column now shows the appliance host name instead of the appliance UUID. However, once you register an appliance, you may see the appliance UUID for a short while until the Cloud Platform gets the host name from the host asset.

The following new columns are added to the table:

Appliance Version

Displays the version number of the WAF appliance. An outdated version is indicated by . To upgrade a WAF appliance to the latest version, simply go to WAF Appliances > WAF Clusters, and then select Upgrade from the cluster's Quick Actions menu.

Appliance Update Date

The date on which the appliance was last updated.

Appliance Config Update Date

The latest date on which the Web Application and other configurations were pushed to the cluster. This column also displays the deployment status of Web Application and other configurations being pushed to the cluster. The absence of a status icon depicts deployment success. Deployment status could be:



In Progress : Deployment of Web application on cluster is in progress



Pending : Deployment of Web application is pending



Partial deployment: Deployment failed on atleast one cluster or appliance assigned to the Web application



Deployment failure: The Web application or configurations haven't got deployed to any of the clusters or appliances assigned to the Web application

- **Unused** : Web application is not deployed on any WAF cluster, or the Web application is deployed on a cluster having no appliances registered to it.

Web Applications View improvements

The WAF Applications tab now provides more information in the form of status icons for each application in the Web applications table.

Name	Policy	Threat Level (Last 24h)	Last Update Date	Details
wasTestToProvisionForWAF http://wasTestToProvisionForWAF	Standard Policy	—	15 Jun 2017 by suneetha routhu (quays_sr60)	waf-site37.eng.qualys.com test
waf-site37.eng.qualys.com test http://waf-site37.eng.qualys.com	portal2.20RcTest	HIGH 13 events	15 Jun 2017 by suneetha routhu (quays_sr60)	<p>Created on 11 Oct 2016 3:12AM GMT+0530 by suneetha routhu (quays_sr60)</p> <p>Updated on 15 Jun 2017 6:08AM GMT+0530 by suneetha routhu (quays_sr60)</p> <p>Clusters: qwa7 p03.eng.qualys.com</p> <p>Certificate: —</p>
WAS-SSLSite http://WAS-SSLSite	Copy of portal2.24Regres...	—	10 Jun 2017 by suneetha routhu (quays_sr60)	TAGS
webApp-2.27CodeWith@.28SQL http://webApp-2.27CodeWith.II	Copy of Copy of Copy of p...	—	08 Jun 2017 by suneetha routhu (quays_sr60)	<p>This asset has not been assigned any tag.</p>
perf_cluster-<script>access(skj)</script>123qwasdfperf_cluster-<... http://name.length	Copy of Copy of Copy of p...	—	08 Jun 2017 by suneetha routhu (quays_sr60)	<p>EVENT STATISTICS</p> <p>13 events have occurred for this application in the last 24h, 13 have been blocked.</p> <p>High 100% Medium 0% Low 0%</p>
webAppWithLOGMODE http://webAppWithLOGMODE	Copy of Copy of Copy of p...	—	08 Jun 2017 by suneetha routhu (quays_sr60)	
WebAppWithCustoPage-123	Copy of Copy of Copy of p...	—	08 Jun 2017 by suneetha routhu (quays_sr60)	

Hovering over a status icon shows information about what the icon depicts.

The Name column displays the healthcheck status beside the Web application name. Healthcheck status could be:

- **Up** : All servers assigned to the Web application are up and running

- **Down** : All servers assigned to the Web application are down

- **Degraded** : Atleast one server assigned to the Web application is down

- **Unused** : Web application is not deployed on any WAF cluster, or the Web application is deployed on a cluster having no appliances registered to it.

The Policy column displays the policy mode beside the policy name. Policy mode could be:

- **Blocking mode** : Enforcing any blocking settings present in the policy

- **Monitoring mode** : Only monitoring events for the Web application

The last update date column displays the deployment status of Web Application and other configurations being pushed to the cluster. The absence of a status icon depicts deployment success. Deployment status could be:



In Progress : Deployment of Web application on cluster is in progress



Pending : Deployment of Web application is pending



Partial deployment: Deployment failed on atleast one cluster or appliance assigned to the Web application



Deployment failure: The Web application or configurations haven't got deployed to any of the clusters or appliances assigned to the Web application



Unused : Web application is not deployed on any WAF cluster, or the Web application is deployed on a cluster having no appliances registered to it.

Issues addressed in this release

Qualys Cloud Suite 2.28 brings you many more improvements and updates.

AV

AssetView

TP

ThreatPROTECT

- Sorting of dashboard table widgets with the "List Assets" mode on, now works properly.
- List of vulnerabilities is now displayed accurately for all filters in View Details.
- The Operating System column is now sorted accurately for Sort by and Group by filters.
- Now the Connectors tab loads correctly every time the is opened.
- Now all widgets will be refreshed every time you switch to your Dashboard.
- While creating table type widget, now data is accurately displayed for any column you choose to display.
- The Trending chart is now plotted correctly with "Today's" data appearing at the rightmost of the chart.
- Now while creating a widget in table form, all the selected columns are displayed correctly.
- Now in the Show Assets view of the connector, only the latest assets discovered by the connector are displayed. Mouse over on the Asset Count status bar will show the user a count of instances discovered in latest run and instances discovered historically across all runs. This information is shown only when the two counts do not match.
- When editing an existing tag rule the parent tag is no more reset to root.
- Now the entire list of tags is shown when the logged-in user is either has a Manager role or role with "Access all" permission and the "in scope" filter is checked.
- Assets are now listed accurately after clicking on "Assets With Patchable Vulnerabilities Aged 30 Days" widget.

TP

ThreatPROTECT

- The layout and style of the threat feed widget menu is now displayed properly.
- While creating table type widget, now data is accurately displayed for any column you choose to display.
- In case no tags are selected or the configured filter resolves to zero assets, then a button is displayed on all screens which will redirect you to the configuration tab for asset correlation.
- TP Feed List help overlay is now displayed only once and is now dismissed on a single click.

SAQ**Security Assessment Questionnaire**

- The Delegate link on a section is appropriately disabled once a campaign is marked complete.
- Appropriate UI text is now displayed to reflect the Delegate functionality.

CA**Cloud Agent**

- You can now install the cloud agent on AIX. You should get AIX enabled in your Qualys subscription before you can see it on the Installation Requirements screen on the Qualys Cloud Platform UI.
- Previously, the Summary on the Activation Job Progress screen for activating modules on cloud agent displayed "none". This is fixed, and now the summary displays the appropriate in-progress information.
- Updated the Cloud Agent supported OS and version list to state PC is supported for Windows 10, Windows Server 2008/R2, Windows Server 2016.
- Updated the Cloud Agent Platform Availability Matrix to reflect supported Windows OS versions.

WAS**Web Application Scanning**

- We now provide a bigger size text box when you define "Explicit URLs to Crawl/REST Path and Parameters/SOAP WDSL location" for a web application.
- We now only allow manual refresh of scan schedule list and have stopped auto-refresh for the same.
- When you select a schedule, the preview section now displays the correct targets (web applications) of the scheduled scan.
- We have now fixed an issue in API when external scanner appliance was used so that the response now correctly displays the external scanner details.
- The Scan Report for WAS scan (with Service Error status) is now generated without any errors.
- The downloaded reports for WAS scan (with Service Error status) now show Vulnerabilities results.