



# Qualys Cloud Platform v3.x

## Release Notes

Version 3.6.1

June 15, 2021

Here's what's new in Qualys Cloud Suite 3.6.1!

**CA**

### Cloud Agent

[Configuration Profile Settings – Scan Delay and Scan Randomize](#)  
[Agent Scan Merge – Customizable Ports](#)

**UD**

### Unified Dashboard

[View Module Details on the Widget Title](#)

**AV**

### AssetView

**VMDR**

### Vulnerability Management Detection and Response

[New Search Token Introduced](#)

Qualys Cloud Platform 3.6.1 brings you many more improvements and updates! [Learn more](#)

## Configuration Profile Settings – Scan Delay and Scan Randomize

With this release, we have added configuration profile settings for VM/PC Scan Interval to delay the start of scanning interval and delay the start of next scanning interval.

**Configuration Profile Creation** Turn help tips: On | Off

**Step 6 of 12**

**Configure Scan Interval for Vulnerability Management**

Configure the interval at which the agent collects data for Vulnerability Management for the assets associated with this profile.

**Data Collection Interval\*** 240 min (240 - 43200)  
The time lapse between the completion of the previous scan and the start of the next scan

**Scan Delay\*** 0 min (0 - 720)  
The time added to the start of scanning, both for new installs and for interval scanning. Value of 0 (zero) means no delay added.

**Scan Randomize\*** 0 min (0 - 720)  
The range of randomization added to Scan Delay to offset scanning. For example, if the randomization range is 60 mins, then a random number between 1 and 60 is calculated and used to delay the start of the next scanning interval. Value of 0 (zero) means no randomization will occur.

Scan Delay and Scan Randomize are supported for Windows Cloud Agent 4.4 and greater

Cancel Previous Continue

**Note:** Scan Delay and Scan Randomize configurations are only supported for Windows Cloud Agent 4.4 and later versions.

**Scan Delay:** A configuration profile setting that defines the **Start Delay** when scanning starts, in one-minute increments. If configured, this delay is added to the start of scanning, both for new installs and for interval scanning. Default and minimum value is 0 (zero) meaning no delay added. Maximum value is 720.

**Scan Randomize:** A configuration profile setting that defines a range of **Randomization Delay** that agents will offset, in one-minute increments. For example, if the randomization range is 60 mins, then a random number between 1 and 60 is calculated and used to delay the start of the next scanning interval. Default and minimum value is 0 (zero) meaning no delay added. Maximum value is 720.

## Agent Scan Merge – Customizable Ports

With this release, agent scan merge ports are made customizable in the Configuration Profile.

### Good to Know!

- Customized ports must be included in the Option Profile for scanner to capture the correlation ID.
- Maximum 5 ports can be added with the comma separated list or with the range.

For example:

10001,10002,10003,10004,10005

10000-10005

- Exclude used ports from other applications to avoid any port collision.

The screenshot shows the 'Configuration Profile Creation' wizard, specifically 'Step 5 of 9: Configure Agent Scan Merge'. The left sidebar lists the steps: 1 General Info, 2 Blackout Windows, 3 Performance, 4 Assign Hosts, 5 Agent Scan Merge (current step), 6 VM Scan Interval, 7 PC Scan Interval, 8 SCA Scan Interval, and 9 PM. The main content area has a title 'Configure Agent Scan Merge' and a toggle 'Enable Agent Scan Merge for this profile' set to 'ON'. Below this is a text input field labeled 'Ports\*' containing '10006,10007,10008,10009,10010', which is highlighted with a red rectangle. A note below the field states: 'Customized ports must be included in the Option Profile for scanner to capture correlation Id'. Further down is a 'Bind All' toggle set to 'ON'. The 'On Premise Detection' section includes input fields for 'IP Address(In Range)' (0.0.0.0 / 0), 'Gateway' (0.0.0.0), 'Subnet Mask' (0.0.0.0), and 'DNS Suffix Regex' (empty, with a hint 'E.g ^(.\*)?example.com\$'). At the bottom are 'Cancel', 'Previous', and 'Continue' buttons.

**Configuration Profile Creation** Turn help tips: On | Off

**Step 5 of 9**

**Configure Agent Scan Merge**

Enable Agent Scan Merge for this profile **ON**

Ports\* 10006,10007,10008,10009,10010

Customized ports must be included in the Option Profile for scanner to capture correlation Id

Bind All **ON**

**On Premise Detection**

IP Address(In Range) 0.0.0.0 / 0

Gateway 0.0.0.0

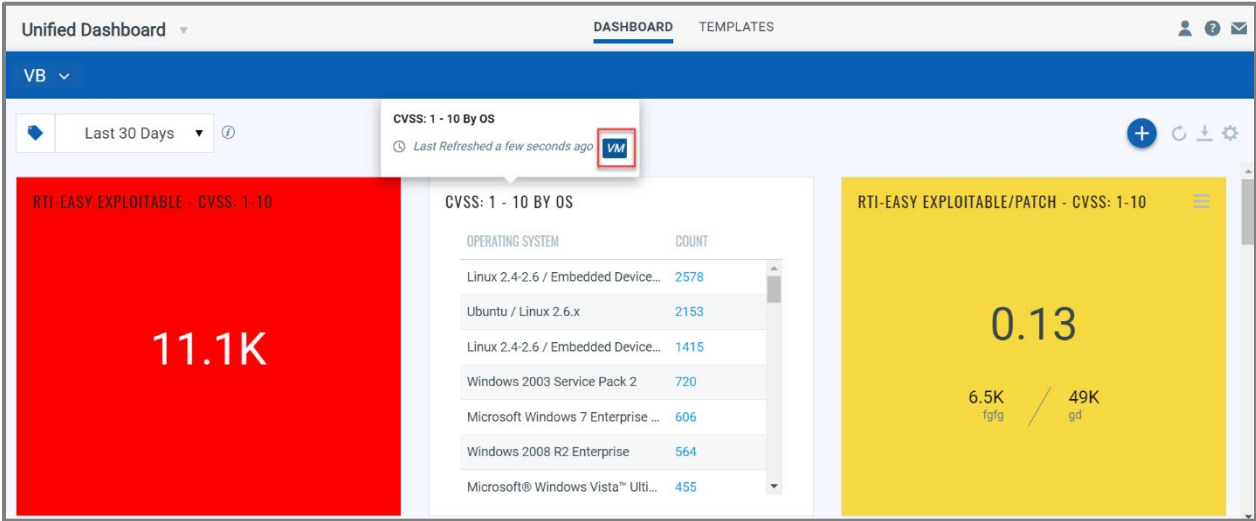
Subnet Mask 0.0.0.0

DNS Suffix Regex E.g ^(.\*)?example.com\$

Cancel Previous Continue

## View Module Details on the Widget Title

You can now view the module to which a widget belongs when you hover over the widget title.





## New Search Token Introduced

For AssetView and Vulnerability Management Detection and Response (VMDR), we have introduced following new search token to enhance your search results assets:

**qualysCorrelationID:** This token will help you find assets with specific Qualys Correlation ID.

## Issues Addressed

UD

### Unified Dashboard

We fixed an issue where if you add a compare level in trending, you could not view the trend lines in charts on Dashboards. This issue occurred because the character limit caused a misalignment on the UI.

AV

### AssetView

We have updated the Asset Management and Tagging API User Guide to reflect the correct curl request call for Azure Connector samples.

### Qualys Cloud Platform

If a connector is in error state during a scheduled scan, the scan report resulted in Error 500. Now, we have fixed the issue so that if the connector is in error state, the scan result reflects the total assets as zero.