

Improving Attack Surface Visibility  
& Control With Policy Compliance

**Humana**®

# A Little Bit About Humana



Health  
Insurance Provider



Wellness  
Programs



Digital  
Health Solutions



Pharmacy  
Services



Provider  
Networks



Community  
Involvement

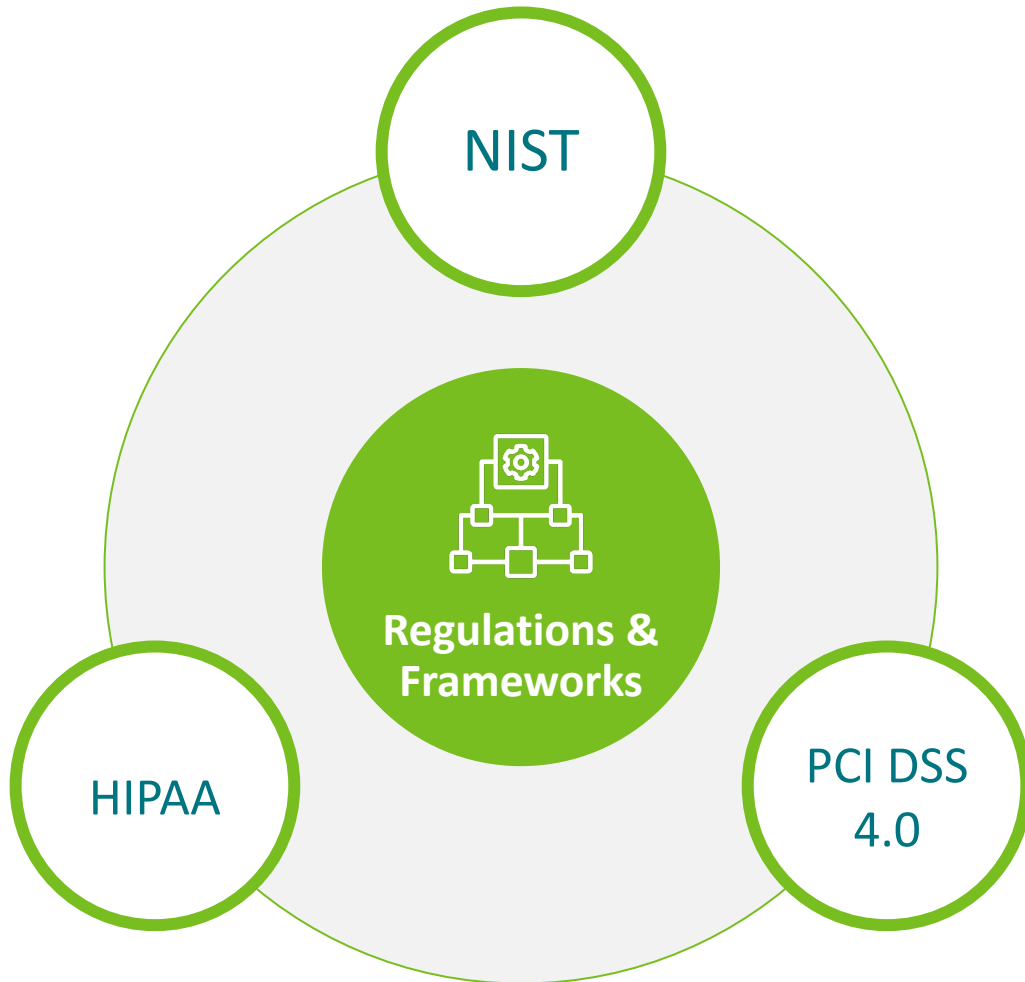


Commitment  
to Technology



# Challenges

# Challenges With Risk Management At Humana



- > Complexity of IT Infrastructure
- > Rapid Technological Changes
- > Incomplete View of Attack Surface
- > Lack of Existing Baselines
- > Compliance Requirements
- > Control Alignment

The image features a green background on the left side, which is decorated with several white plus signs of varying sizes. The right side of the image is white. The word "Solution" is written in a green, sans-serif font, positioned in the center of the white area.

Solution



# Policy Compliance Solution Requirements



Automated  
Compliance Scanning



Comprehensive  
Reporting



Near  
Real-Time Alerts



Policy Customization  
and Management



Centralized  
Management



Integration with  
Existing Tools

# Why We Chose Qualys

## Reduce Security and compliance risks



Compatibility with Existing Infrastructure



Customization and Flexibility



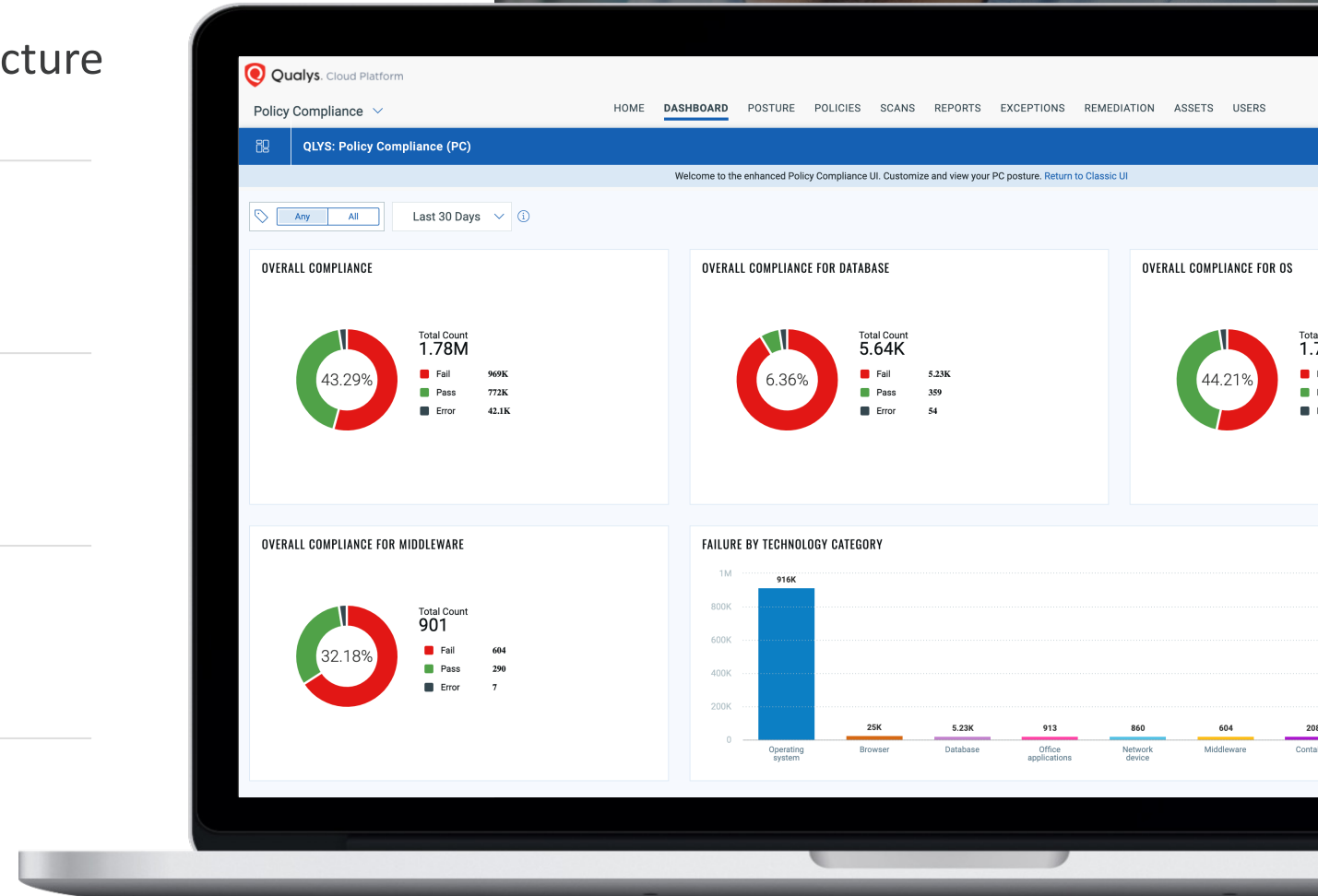
Comprehensive Solution



Tool Consolidation



ServiceNow Integration





# Outcomes



# Improved Visibility and Control

## Pre-built policies and controls



### Background:

Implement and mature our secure configuration management program by creating standardized baselines across prioritized technologies and monitor for configuration drift to limit the attack surface while enabling business functionality



### Action:

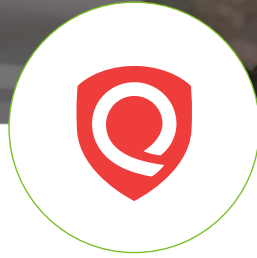
- Identified our top 10 technologies based on risk
- Implemented a process to review, approve, and document the baseline
- Scanned, monitored, and report



### Outcome:

By implementing a well-defined process, we ensure our most at risk technologies adhere to our standards and provide continuous insight into our security posture. Our strategy not only mitigates potential threats but aligns with industry best practices and creates trust amongst cross-functional teams

# Results



Increased visibility into security posture

Configuration drift identification

Established standardized baselines & documentation

Fostered trusted partnerships and achieved alignment across teams

Achieved 100% compliance on standard golden images



## **Efficiency Gains:**

Significant time saved with Out of the Box Compliance Library



## **Operational Cost And Time Saved:**

Leveraging existing platform accelerated Time To Value



## **Reduced Risk:**

29% risk reduction by standardizing and enforcing baseline configurations

Humana®



## Dominique Dixon

---

Associate Director,  
Threat and Vulnerability Management



Decade of experience in threat and vulnerability management, specializing in both cloud and on-prem environments



Expertise includes managing security within Kubernetes environments



More than 7 years at Humana, previously at Signature Healthcare



Louisville Kentucky Metro Area