



GE VERNOVA

ENTERPRISE PATCH MANAGEMENT

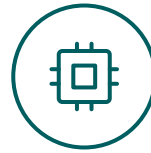
Corey Amsler, GE Vernova



Corey Amsler
Director
Risk Management - EVM



15 years at GE/GE Vernova



Extensive experience across spectrum of IT

- ✓ 5 Years Vulnerability Remediation/Patching
- ✓ 5 Years Vulnerability Detection and Response



GE VERNOVA



April 2, 2024
Spun off from GE



**Cambridge,
Massachusetts**
Headquarters



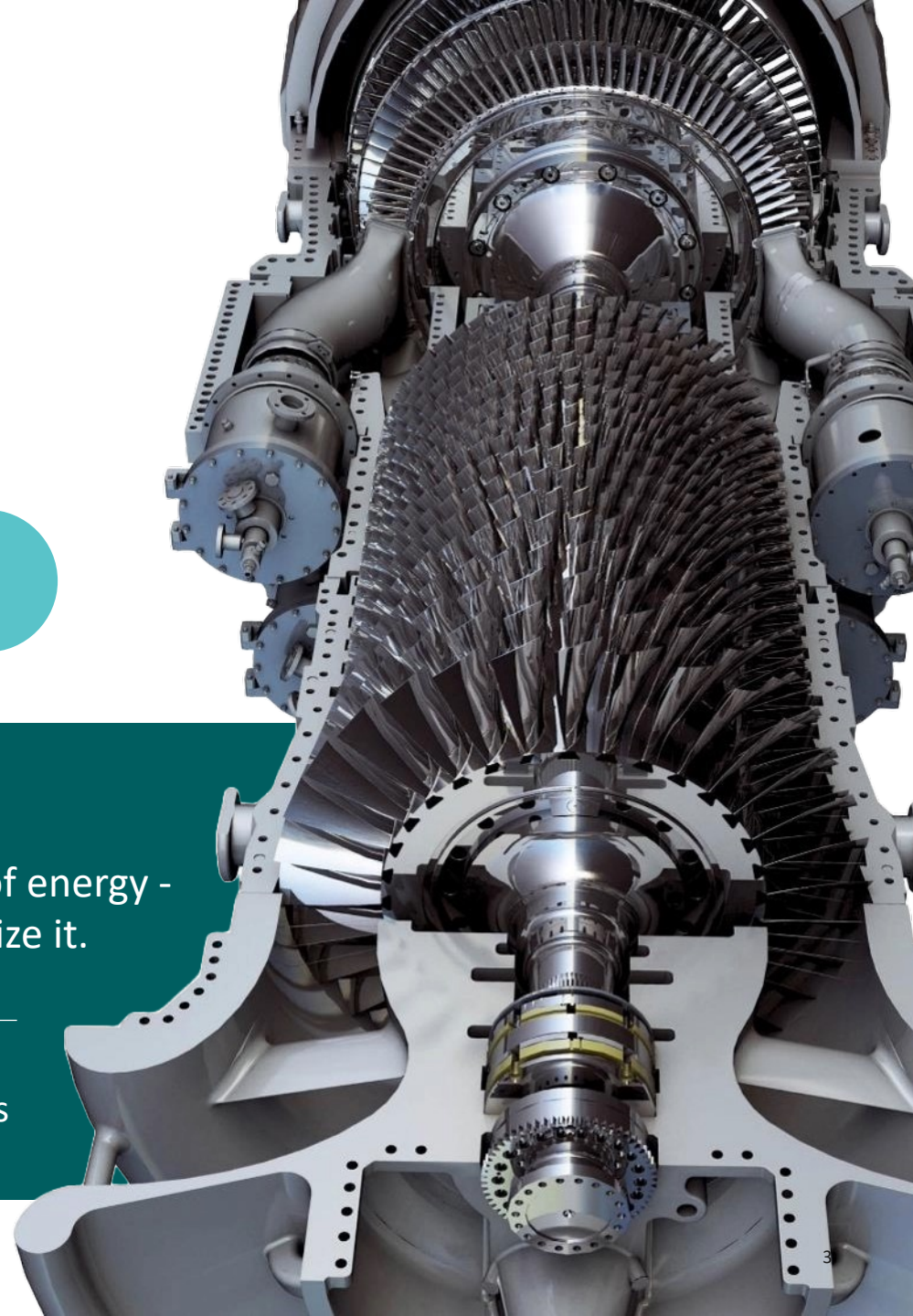
75,000
Employees



Our purpose:

Building on 130+ years of experience, we are leading a new era of energy - electrifying the world while simultaneously working to decarbonize it.

Generate ~25% of worlds electricity with 55,000 wind turbines and 7,000 gas turbines



Problem Statement

CTO - Organization Needed to Provide Patching Services



Build Quickly



Infrastructure spans on-prem and multiple cloud providers



Qualys Patch Management selected after rapid evaluation

Reasons:

- ✓ Fast deployment & Implementation
- ✓ Expandable
- ✓ Unification of processes

Solution

CTO - Partnership and Design Implementation



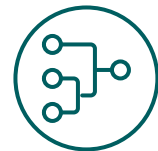
Standardized tagging is the keystone to a successful program



Mixture of custom attributes (on-prem) and cloud-based tags to develop scope



Firm and repeatable patching schedule



Utilize Qualys tagging and user role-based access to allow team members access to Patch Management

Continuous Improvement



Enhanced native PM capabilities by using pre- and post-actions

- ✓ Use pre-action to install missing certs
- ✓ Patch Extended Update Support (EUS) servers



EVM team expanded into 3rd party patching

- ✓ Automated weekly
- ✓ Target high risk low impact including browsers

Results



Rapidly close
vulnerabilities



Patching
foundation set,
can deploy to
other teams
as needed



Thousands of
assets
onboarded



Multiple
Thousands
of patches
deployed



Minimal impact



Corey Amsler

Director

Risk Management - – EVM @ GE Vernova



www.linkedin.com/in/coreyamsler/



www.gevernova.com

Scan Here

